

Lincolnshire Attainment in Maths Project 2019/20

Project summary

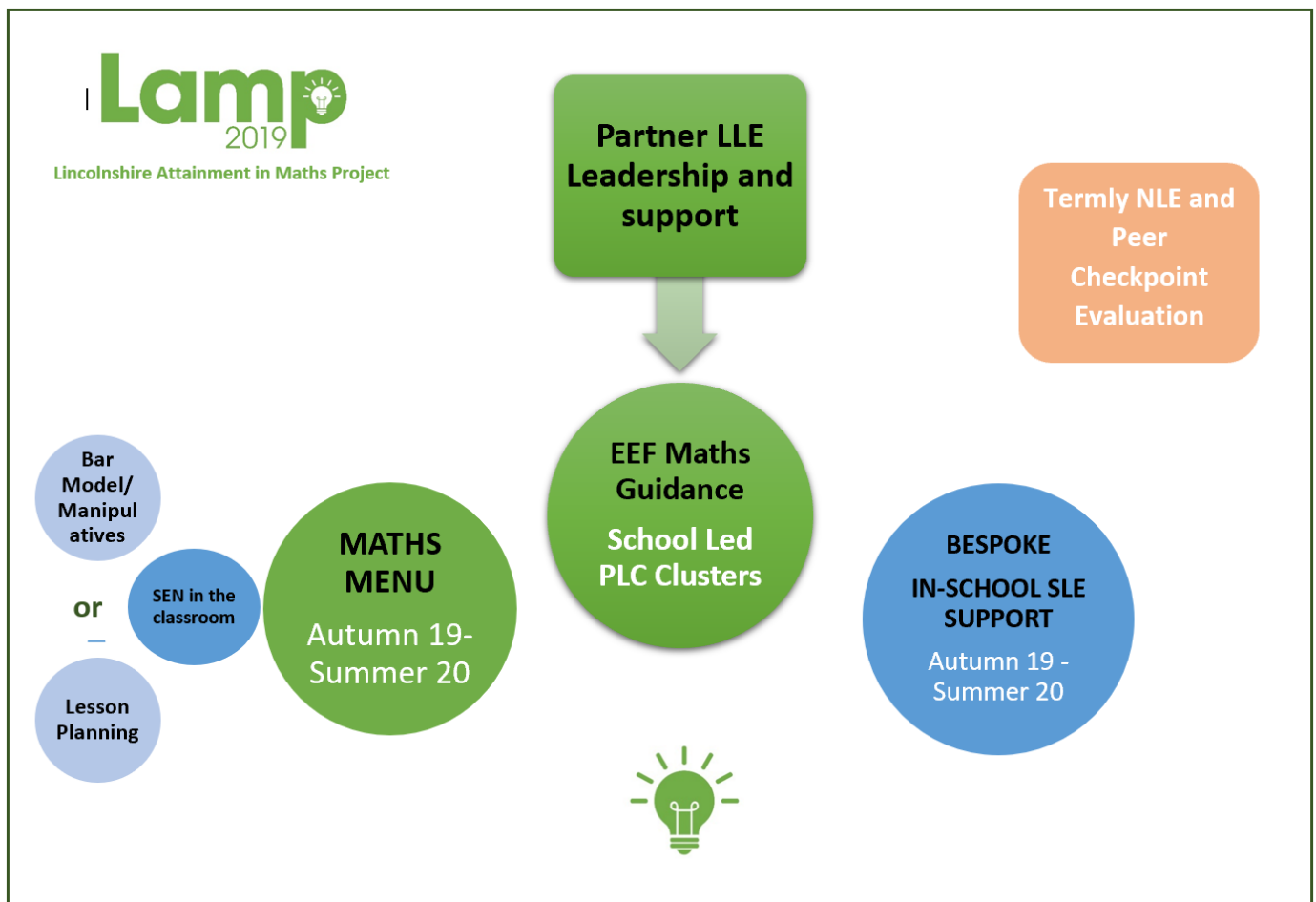
LAMP19 is the maths focused school improvement programme in Lincolnshire targeted at raising KS2 attainment through effective implementation of the evidence-based practice addressed in the EEF guidance document 'Improving Mathematics in Key Stages 2 and 3'.

Strategies addressed target classroom teaching and learning as well as strategic subject leadership raising the confidence of maths for both children and teachers across the school.

The integrated structure of the project weaves the Core PLC structure of networks, focussing on the EEF Recommendations, within leadership support for senior leaders in school together with direct approach to new and proven teaching strategies to ensure embedded learning of the subject.

Underpinning the programme is the methodology of sustained school improvement to empower staff to structure the school's approach to delivery ensuring a viable, sustainable and effective approach to teaching maths within the curriculum.

To register your school for the project please contact stss@connect-tsa.net or ring 01205 312153.



Project outline

Breakdown of LAMP 19 Offer:		
1.	Attendance at a Launch Event – 25.9.19: Attendance at ‘Closing the Gap’ Launch event to ensure smooth commencement and implementation of the project.	✓
2.	Professional Learning Communities: The schools will be grouped geographically to identify Hubs that will meet each half term as a Professional Learning Community (PLC), each will be led by a Hub Lead. Each school will nominate a ‘School Learning Champion’ to work within the Hub for the duration of the project, who’s role will be to disseminate expertise and leadership directly back to school.	✓
3.	Individual LLE support: Every school in the project will be supported by a LAMP Local Leader of Education (LLE) who will work directly with the Head Teacher to analyse school information through a ‘Deep Dive’ discussion and direct the support to ensure maximum impact on teaching and learning of mathematics in the school. The LLE will maintain contact with the school for the duration of the project to support and advise school leaders as appropriate and provide additional support as needed	✓
4.	Maths Menu Pathway: Schools will be offered a pathway to drill down further into the knowledge gained through the PLCs. The Pathway will cascade the best practice distilled from the LAMP18 project into schools to support subject leaders lead their subject effectively and	✓
5.	Attendance at a Legacy Event – tbc: Attendance at ‘Closing the Gap’ Legacy event to review impact of project, collate Case Studies/Research posters	✓
TOTAL COST TO SCHOOLS:		£2650
Option to buy into additional Bespoke Days	Tailored days to support embedding strategies in school can be delivered at any point throughout the project: BRONZE – 2 days @ £350 each – TOTAL £700 SILVER – 4 days @ £350 each – TOTAL £1400 GOLD – 6 days @£350 each – TOTAL £2100	

Project timeline

Following the LAMP19 Launch on 25th September 2019 the LAMP19 Core begins with the LLE visits commencing in the Autumn Term 2019. Hub (PLC) meetings will also commence in Autumn 2019 and continue at 6 weekly intervals.

Start date	Main activity/milestone
July 2019	Partnership Agreement with schools.
25 th September 2019 (PM)	LAMP19 Launch event (HT and Maths Leaders; CoG invited)
July – Sept 19	School align project ambitions to SDP; professional dialogue in school leadership teams
September 2019	Schools identify maths pathway
October 2019	Pathway delivery starts
September/October 2019	Contact Point 1 HT meets with LLE, Deep Dive and agreement of core project targets. Dates set for project engagement
October 2019	PLC 1
December 2019	PLC 2
February 2020	Contact Point 2
February 2020	PLC 3
April 2020	PLC 4
May 2020	PLC 5
June 2020	Contact Point 3
July 2010	PLC 6 (Legacy target setting)
Bespoke SLE days	To be scheduled to suit school's need BRONZE – 2 days SILVER – 4 days GOLD – 6 days

To register your school for the project please contact stss@connect-tsa.net or ring 01205 312153.